



COVID-19 Telemedicine Implementation ECHO

Virtual Health Network Telemedicine Peripherals & Recap of Key Points

JUNE 8, 2020

OLIVER BLACK: IT SPECIALIST, UT SYSTEM VIRTUAL HEALTH NETWORK

MARI ROBINSON JD: DIRECTOR, UT SYSTEM VIRTUAL HEALTH NETWORK

WARIDIBO ALLISON MD, PHD: ASSISTANT PROFESSOR/INFECTIOUS DISEASE,
MEDICAL DIRECTOR, SAN ANTONIO AIDS FOUNDATION

Telemedicine Peripherals used by the Virtual Health Network

Oliver Black, IT Specialist
UT System Virtual Health Network



THE UNIVERSITY of TEXAS SYSTEM
FOURTEEN INSTITUTIONS. UNLIMITED POSSIBILITIES.

WWW.UTSYSTEM.EDU

Medical Camera

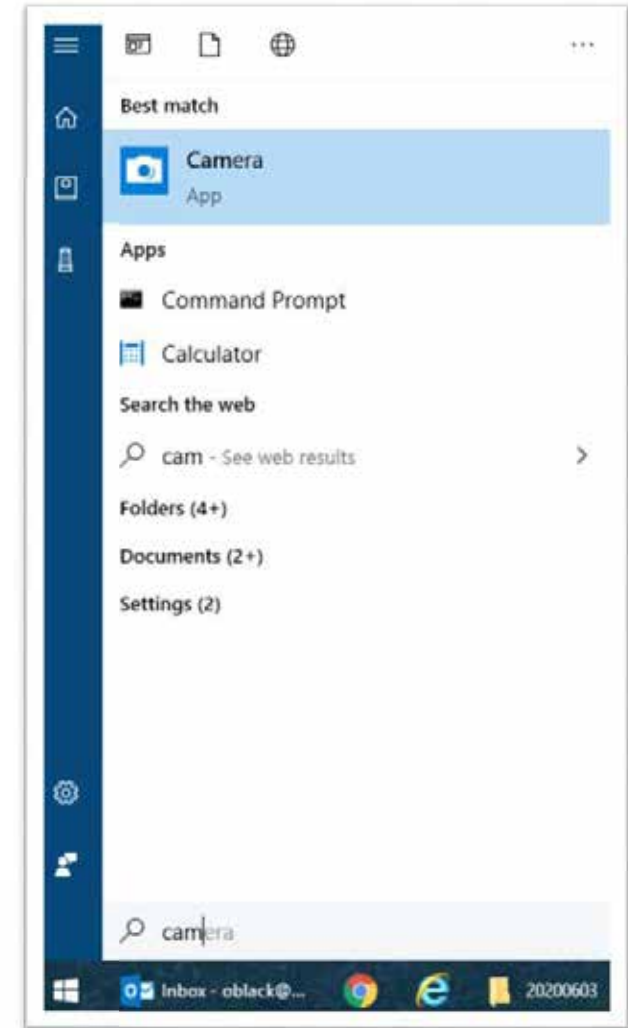
Hand Held Chassis

- High Definition (1920 x 1080)
- Interchangeable lenses for different medical specialties
- Built In Screen
- Newer units have Touch Screen
- Live Video or Store and Forward File Capability
- HDMI or USB output



PC Based Setup for Medical Camera

- Go to Windows Start Menu, type in “Camera”.
- Select and run the **Camera APP** Full Screen on Second Monitor
- In Video Software, share either the App or the Second Monitor



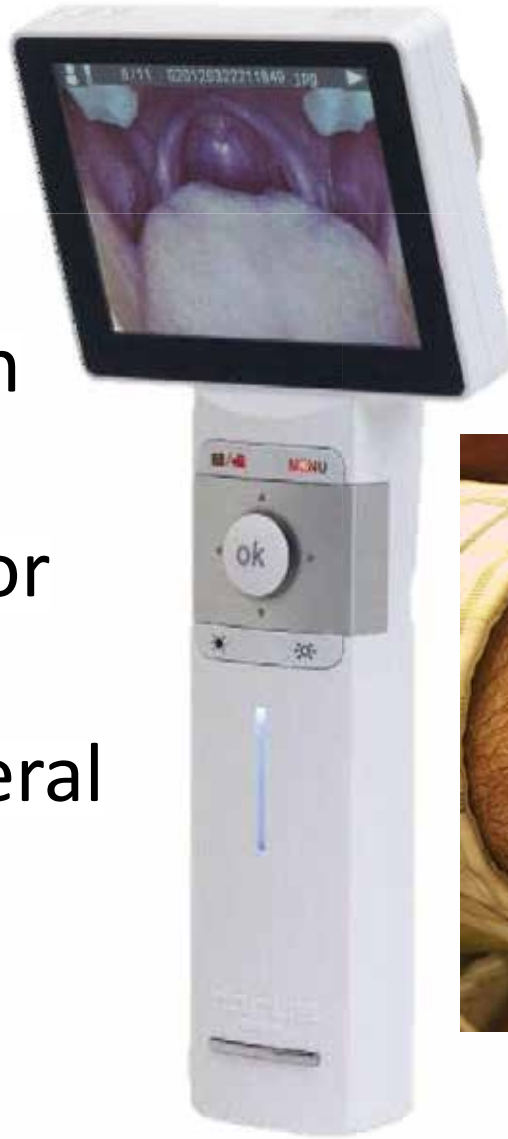
Medical Camera Ear

- Otoscope Lens
 - Built in Illumination LEDs
 - Provides imaging for tympanic membrane and auditory canal.
- Uses standard Heine or Welch-Allyn specula (adult and pediatric)



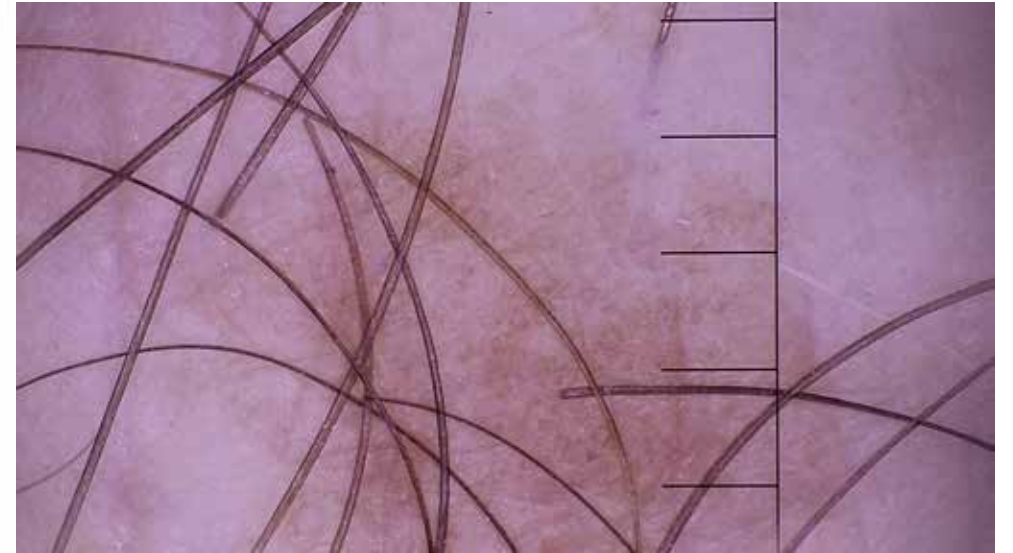
Medical Camera General

- General View Lens
 - Built in Illumination LEDs
 - Provides imaging for dermatology, oral examinations, general body images

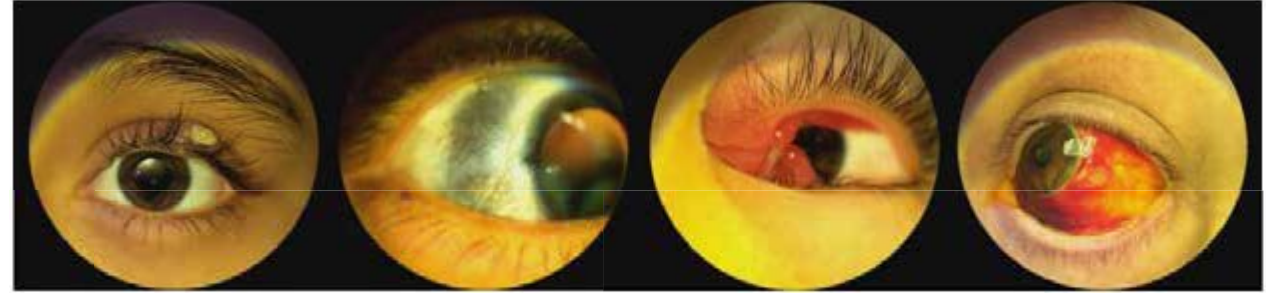


Medical Camera Derm

- Surface Lens (Dermatology)
 - Built in Illumination
 - Built-in polarization for reduction of skin reflection
 - Equipped with 5mm ruler (1mm increments)



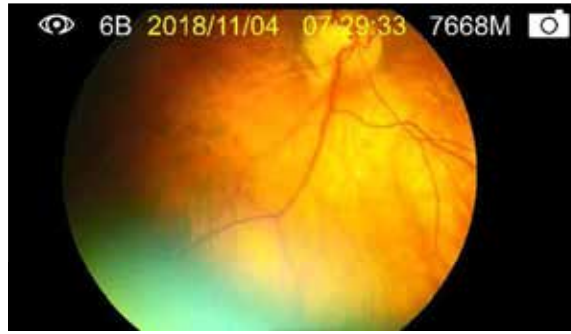
Medical Camera Eye



- Anterior Chamber Lens
 - Built in Illumination LEDs
 - Built in cobalt blue lighting for fluorescein eye stain test
 - Provides highly magnified images of the anterior segment



Medical Camera Retina



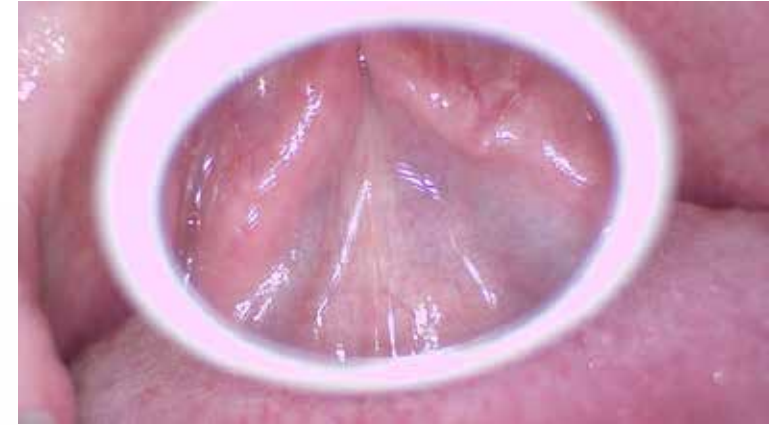
- Fundus Camera Lens
 - Built in IR LED lighting for focusing on retina
 - Press OK and 200ms flash captures the image.
 - Provides highly magnified images of the retina without dilating of the eye.



Medical Camera Oral

- Dental Lens

- Built in Illumination LEDs
- Disposable Mirror Assembly
- Lens rotates 360 degrees



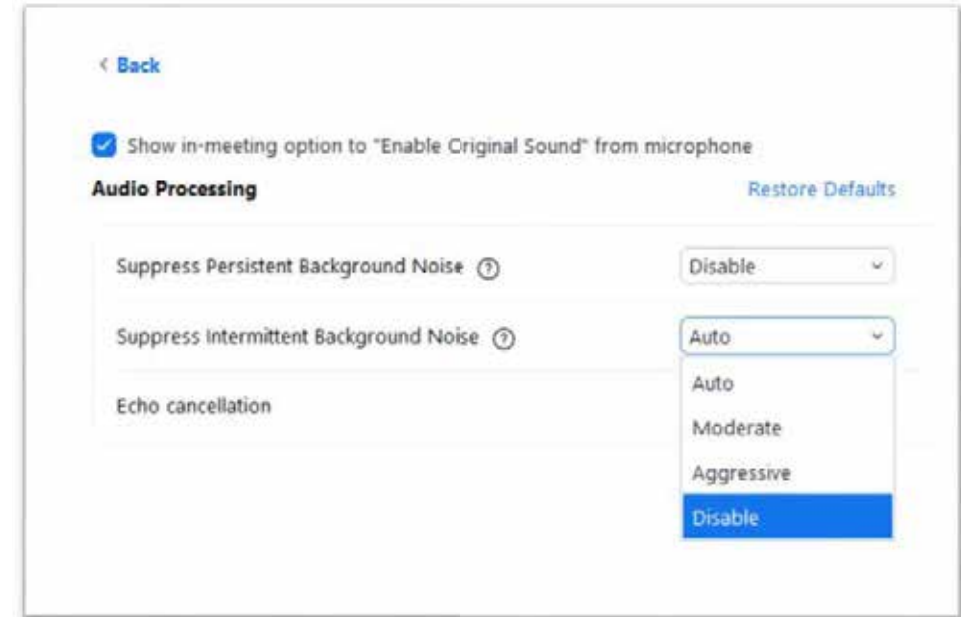
Electronic Stethoscope

- Thinklabs One
 - Up to 100x amplification
 - 30hz to 1500hz Frequency Response
 - Built in adjustable filtering
 - Built in volume control
 - Rechargeable battery



PC Based Setup for Stethoscopy

- Go to **Audio Settings** > **Advanced** and turn off all audio background noise filters.



Questions?

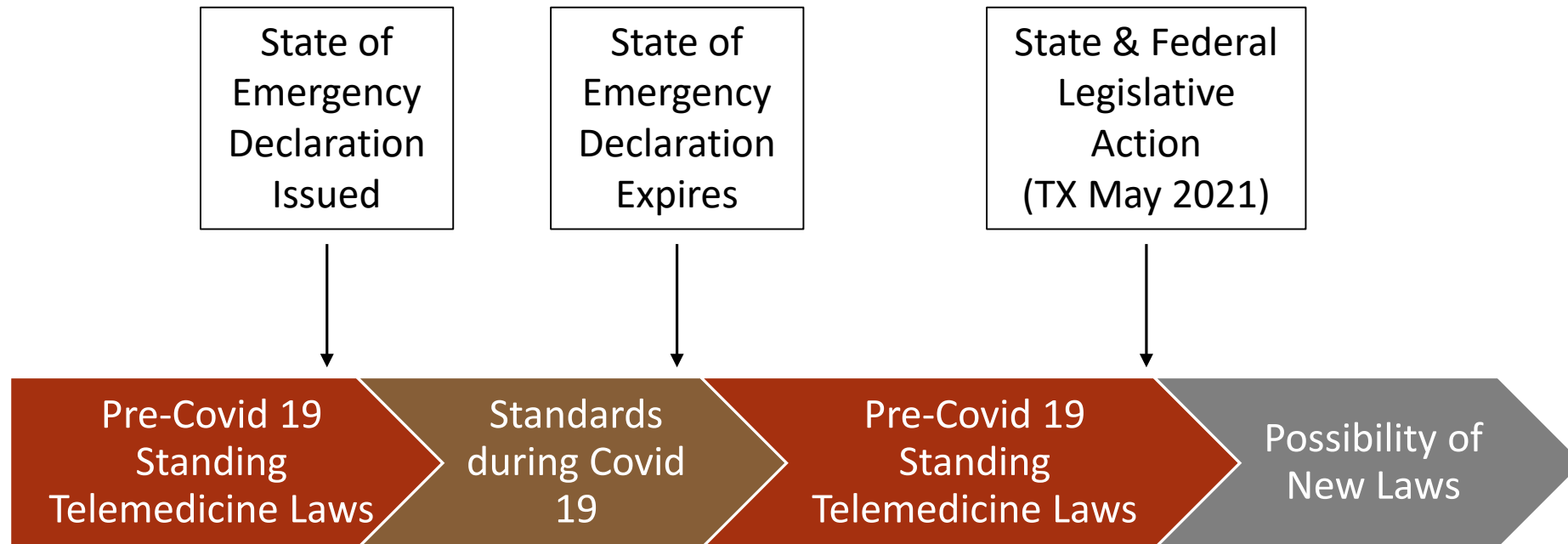




COVID-19 Telemedicine Implementation: Key Points

MARI ROBINSON JD: DIRECTOR, UT SYSTEM
VIRTUAL HEALTH NETWORK

Understanding the Covid 19 Legal Impact



What can I do going forward?

Standard of
care

Credentialing

Licensing

Payment

Requirement	Covid19	Normal
HIPAA	“Enforcement discretion” but encourages warning & doesn’t approve all services	Written acknowledgment prior to initiating treatment & private connection (BAA)
Consent	Waived via TMB, but best practice would be documentation of oral consent	Written consent prior to initiating treatment
Prescribing	Waived via DEA & TMV	Must have prior in person visit to prescribe scheduled drugs (DEA) & for chronic pain (TMB)
Technology: Medicare	Location requirements are waived via HHS Secretary (not all)	Live video & audio, with strict geographic, patient location, and provider requirements.
Medicaid & Private Pay (TDI)	Must pay same rate as in person for any allowed platform if a covered service	Must pay for video telemedicine if a covered service
Private Pay (ERISA)	Discretionary, but may cover things during this time	Discretionary

Links

HIPAA: <https://www.hhs.gov/hipaa/for-professionals/special-topics/emergency-preparedness/notification-enforcement-discretion-telehealth/index.html>

<https://www.hhs.gov/sites/default/files/february-2020-hipaa-and-novel-coronavirus.pdf>

TMB: <http://www.tmb.state.tx.us/page/coronavirus>

DEA: <https://deadiversion.usdoj.gov/coronavirus.html>

CMS: <https://edit.cms.gov/files/document/medicare-telehealth-frequently-asked-questions-faqs-31720.pdf>

TDI: <https://www.tdi.texas.gov/news/2020/coronavirus-updates.html>

HHSC: <https://hhs.texas.gov/services/health/coronavirus-covid-19/coronavirus-covid-19-provider-information>



- The UT-VHN creates access to medical care that**
- **is accessible to currently underserved populations**
 - **is based in a high quality, academic setting**
 - **integrates with the care team already in place**
 - **creates a continuous physician patient relationship**
 - **covers a broad range of specialties at eight different campuses**



Next Steps

HIV Care Continuum Telemedicine Technical Assistance ECHO

- Focus is on Texas but a lot will be applicable across state lines
- In partnership with UT Health San Antonio South Central AIDS Education Training Center (AETC)
- Likely bimonthly



STD Telemedicine Technical Assistance ECHO

- In partnership with Cardea/ TX DSHS – 4 sessions between now and the end of the year



NEW: CME and MOC credits will be available for the sessions

Launch dates pending but planned for August



We will send registration links to everyone who has registered for this ECHO



Concluding Thought

The Japanese word for crisis is translated to “Kiki”

It has two characters: 危機

The first character (危) means “**dangerous**”

The second (機) means “**opportunity**”.

Thank you

Questions?