



NEONATAL ABSTINENCE
SYNDROME SYMPOSIUM



NEONATAL ABSTINENCE SYNDROME SYMPOSIUM

JUNE 11–13, 2025 HOUSTON, TEXAS



TEXAS
Health and Human
Services



TABLE OF CONTENTS

Agenda	p3
Meet the Presenters	p6
Online Program Materials	p7
Welcome Letter	p8
Continuing Education.....	p9
Planning Committee	p9
Thank You Exhibitors	p10
Hotel Information	p11
Things to do in Houston	p11
Conference Policies	p12



10TH ANNUAL NEONATAL ABSTINENCE SYNDROME PRE-CONFERENCE

WEDNESDAY, JUNE 11, 2025

7:30–8:30 a.m.	Pre-function area	Registration check in and continental breakfast
8:30–11:30 a.m.	Regency CD	Family Care Portfolio; Andrea K. Rincones-Hernandez, CHWI and Maria Morales, CHW, Baylor College of Medicine
8:30–11:30 a.m.	Westheimer	Brief Motivational Interviewing: Supporting the Behavior Change Process; Dr. Stacy Ogbeide, PsyD, ABPP, Associate Professor (Tenure Track) of Family and Community Medicine and Psychiatry and Behavioral Sciences, UT Health San Antonio
8:30–11:30 a.m.	Regency AB	Trauma Informed Care for Substance Use Disorder; Sonya R. Hardin, PhD, MBA/MHA APRN, FAAN, Dean and Professor, Dr. Patty L. Hawken Nursing Endowed Professor, School of Nursing, UT Health San Antonio

10TH ANNUAL NEONATAL ABSTINENCE SYNDROME SYMPOSIUM

Back to Basics: NAS Continuum of Care

WEDNESDAY, JUNE 11 - SYMPOSIUM DAY 1

12:30–1:30 p.m.	Pre-function area	Registration check in and Hearty Break with drinks
1–1:30 p.m.	Regency AB	Welcome: by Sonya R. Hardin, PhD, MBA/MHA, APRN, FAAN, Dean and Professor, Dr. Patty L. Hawken Nursing Endowed Professor, School of Nursing, UT Health San Antonio
1:30–2:30 p.m.	Regency AB	KEYNOTE: Cradled in Care: Foundational NAS Support for Infants and Families; Mande Holmes, MSN, APRN, NNP-BC, Neonatal Nurse Practitioner, Texas Children's Hospital
2:45–4:15 p.m.	Regency AB	Mom/Family Panel with Vanessa Fears, LMSW, LCDC; Dr. Yolanda Ross, DSW/LCSW-S/LCDC/MHA, Santa Maria – A United Way Agency; Steven Finees Flores, MA, LCDC-I, PRSS; Aubrey Davis, Full Time Mom; Faith Thompson, Full Time Mom
4:30–5:30 p.m.	Pre-function area	Vendor reception with finger food and refreshments

THURSDAY, JUNE 12 - SYMPOSIUM DAY 2

7:30–8:30 a.m.	Pre-function area	Breakfast and coffee served
8–9 a.m.	Regency AB	KEYNOTE: Respectful Care for All Families; Rebecca L. Vahle, MEd, Executive Director and Founder of Family to Family Support Network
9–9:30 a.m.	Pre-function area	Break with vendors
9:30–10:30 a.m.	Regency AB	Child Welfare Updates; Marco Quesada, MA. Division Administrator for Master Investigations, Child Protective Investigations, DFPS

10:30–10:40 a.m. Pre-function area Break with vendors

THURSDAY, JUNE 12 - BREAKOUT SESSIONS

10:40–11:40 a.m.	BREAKOUT 1 Regency AB	Empowering Recovery: Unique Considerations and Best Practices in Addiction and Mental Health Treatment for Pregnant and Parenting Women, Overcoming Substance Use, and Embracing Resilience; Ariadna Forray, MD, Chief, Section of Psychological Medicine and Director, Center for the Wellbeing of Women and Mothers, Yale Medical Director, ACCESS Mental Health for Moms, Associate Professor of Psychiatry, Yale School of Medicine
	BREAKOUT 2 Regency CD	DFPS and Substance Use....How can I help? Jessica Johnson, CPI Substance Use Program Specialist (Regions 01-05)
	BREAKOUT 3 Westheimer	Back To Basics: NAS Continuum of Care 2025 Trauma-Informed Soul Care Continuum-PART 1; Keely Petty, CPsyD. Kick Start Your Life™ with Dr. Keely!

11:40–1 p.m. Pre-function area Lunch served

1–2 p.m.	BREAKOUT 1 Regency AB	Congenital Syphilis in Texas: Intersections with Substance Use Disorder; Kelly Fegan-Bohm, MD, MPH, MA, Medical Director, Community Health Improvement Division, Texas Department of State Health Services; Amy Carter, Congenital Syphilis Coordinator, HIV/STD Prevention and Care Unit, Texas Health and Human Services
	BREAKOUT 2 Regency CD	Buprenorphine vs Methadone in Pregnancy; Luke Newton, MD, Obstetrics and Gynecology, UT Health San Antonio
	BREAKOUT 3 Westheimer	Back To Basics: NAS Continuum of Care 2025 Trauma-Informed Soul Care Continuum-PART 2; Keely Petty, CPsyD. Kick Start Your Life™ with Dr. Keely!

2–2:10 p.m. Pre-function area Break with vendors

2:10–3:10 p.m.	BREAKOUT 1 Regency AB	Bridging Gaps in Substance Use and Mental Health Care for Pregnant and Postpartum Women; Tara E. Karns-Wright, PhD, MS, Assistant Professor Dept. of Psychiatry and Behavioral Sciences, UT Health San Antonio; Sarah Wakefield, MD, Professor and Chair, Texas Tech University Health Science Center
	BREAKOUT 2 Regency CD	Pharmacotherapy of Substance Use Disorders; Sidarth Wakhlu, MD, Professor of Psychiatry, Distinguished Teaching Professor, Clinical Director Addiction Psychiatry Service, Addiction Psychiatry Fellowship Director, UT Southwestern Medical Center, Professor Clinical Sciences, TCU Burnett School of Medicine

3:10–3:20 p.m. Pre-function area Break with vendors

3:20–3:50 p.m.	BREAKOUT 1 Regency AB	Perceptions Toward Pregnant Women on Medication for Opiate Use Disorder (MOUD); Lucy Rolfes, RN, BSN, NOWS Community Nurse Liaison, St. Elizabeth Healthcare Baby Steps Program
	BREAKOUT 2 Regency CD	Generation O: Creating Lifelong Supports for the Smallest Survivors; Lennette Serlo, Founder and CEO, Jeanine Nordin, Director of Vision and Planning; Heather Howard, Director of Finance; Generation O

3:20–3:50 p.m.	BREAKOUT 3 Westheimer	Building Bridges: Trust and Rapport in Recruiting Research Participants; Mia Martinez-Palacios, MSB, UT Health San Antonio School of Nursing
3:50–4 p.m.	Pre-function area	Break with vendors
4–5 p.m.	Regency AB	Optimizing the Care and Treatment of Pregnant Women with Opioid Use Disorder; Joshua Kern MD, FASAM. Assistant Professor of Emergency Medicine, UT-Southwestern Medical Center/Parkland Health and Hospital System

FRIDAY, JUNE 13 - SYMPOSIUM DAY 3

7:30–8:30 a.m. **Pre-function area** Breakfast and coffee served

8:15–9:15 a.m.	BREAKOUT 1 Regency AB	HHSC Intimate Partner Violence Prevention and Services to Support Women and Families in Texas; Megan Bermea, MPA, CTCM, Program Director, HHSC Office of Family Services
	BREAKOUT 2 Regency CD	Navigating the JPS Hospital and Criminal Justice Systems; Cindy Dinsmore, MA, LCDC, Program Coordinator, JPS Mom and Baby Program, JPS Health Network; Melissa Chambers, LCDC/Case Manager, MINT Program
	BREAKOUT 3 Westheimer	Medication and Meetings: Physical and Emotional Recovery; Jeff Kamen, MBA, LCDC, Executive Director MARA International; Mark (Murk) Palinski II, NCCPSS, Peer Support Specialist

9:15–9:30 a.m. **Pre-function area** Break with vendors

9:30–10 a.m. **Regency AB** **Preserving the Mother-Infant Dyad: Trauma-Informed Advocacy for Pregnant and Parenting Women with Opioid Use Disorder;** Heather Howard, PhD, LCSW, Chief Strategy Officer; Allison Jimenez, LMHC, NCC, CAP, Vice President of Program Development, Hanley Foundation

10–10:10 a.m. **Pre-function area** Break with vendors

10:10–11:10 a.m. **Regency AB** **Endnote: Back to Basics: The Why and The How of Supporting Foundational Relationships;** Umber Darilek, RN, PhD, Assistant Professor, University of Texas Arlington

11:10–11:20 a.m. **Regency AB** **Wrap-up:** Justin McClenny, LCDC, Intervention Program Specialist, Texas Health and Human Services

11:20–11:50 a.m. **Pre-function area** Grab and go snacks

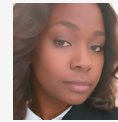
MEET THE PRESENTERS



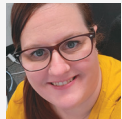
Megan Bermea, MPA, CTCM
Program Director, HHSC Office
of Family Services



Kelly Fegan-Bohm, MD, MPH, MA
Medical Director, Community
Health Improvement Division,
Texas Department of State
Health Services



Jessica Johnson
CPI Substance Use Program
Specialist
(Regions 01-05)



Amy Carter
Congenital Syphilis
Coordinator; HIV/STD
Prevention and Care Unit;
Texas Department of State
Health Services



**Steven Finess Flores, MA,
LCDC-I, PRSS**
Community Educator;
Corazón San Antonio



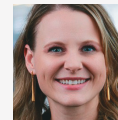
Jeff Kamen, MBA, LCDC
Executive Director, MARA
International, LLC



Melissa Chambers, BS, LCDC
Mom and Baby Program,
Licensed Chemical
Dependency Counselor/
Case Manager, JPS Health
Network



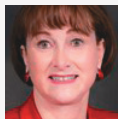
Ariadna Forray, MD
Chief, Section of Psychological
Medicine; Director, Center for
the Wellbeing of Women and
Mothers; Yale Medical Director,
ACCESS Mental Health for
Moms; Associate Professor of Psychiatry,
Yale School of Medicine - Yale New Haven
Hospital



Tara Karns-Wright, PhD, MS
Assistant Professor, Dept.
of Psychiatry & Behavioral
Sciences; Senior Director, Be
Well Texas, UT Health San
Antonio



Aubrey Lynn Davis
Full Time Mom



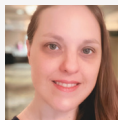
**Sonya R. Hardin, PhD, MBA/
MHA APRN, FAAN**
Dean & Professor, Dr. Patty
L. Hawken Nursing Endowed
Professor, School of Nursing,
UT Health San Antonio



Joshua Kern, MD
Assistant Professor, Dept.
of Emergency Medicine;
Perinatal Intervention Program/
Addiction Medicine,
University of Texas,
Southwestern, Parkland Health and Hospital
System



Umber Darilek, PhD, RN
The University of Texas at
Arlington, Assistant Professor



**Mande Holmes, MSN,
APRN, NNP-BC**
Neonatal Nurse Practitioner,
Texas Children's Hospital



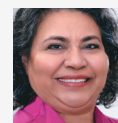
Mia Martinez-Palacios, MSB
School of Nursing, UT Health
San Antonio



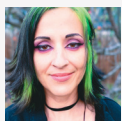
Cindy Dinsmore, MA, LCDC
Program Coordinator;
JPS Mom & Baby Program;
JPS Health Network



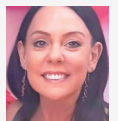
Heather Howard, PhD, LCSW
Chief Strategy Officer, Hanley
Foundation



Maria Morales, CHW
Baylor College of Medicine



Vanessa Fears, LMSW, LCDC



Heather Howard
Director of Finance,
Generation O



Luke A. Newton, MD
Professor, Division Director,
General Obstetrics and
Gynecology, Long School of
Medicine Endocrine, UT Health
San Antonio

MEET THE PRESENTERS



Jeanine Nordin
Director of Vision and Planning,
Generation O



Marco Quesada, MA
Division Administrator for
Master Investigations, Child
Protective Investigations, DFPS



Lenette Serlo
Founder & CEO, Generation O



Stacy Ogbeide, PsyD, ABPP
Associate Professor, Family
& Community Medicine and
Psychiatry and Behavioral
Sciences, UT Health San
Antonio



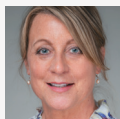
**Andrea K. Rincones-
Hernandez, CHWI**
Baylor College of Medicine



Faith Thompson
Full Time Mom



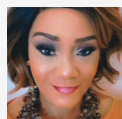
Mark Palinski II, NCCPSS
Peer Support Specialist



Lucy Rolfes, RN, BSN
NOWS Community Nurse
Liaison; St. Elizabeth
Healthcare, Baby Steps
Program



Rebecca Vahle, MEd
Founder & Executive Director



Keely Petty, Csy.D
Trainer Coordinator; WestCare
Foundation, TIMM Program



**Yolanda Ross, DSW/LCSW-S/
LCDC/MHA**
Santa Maria – A United Way
Agency
2505 Parker Road, Houston,
TX 77093



Sarah Wakefield, MD
Associate Professor and Chair,
Psychiatry, School of Medicine,
TTUHSC



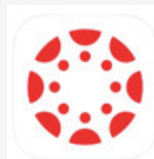
Sidarth Wakhlu, MD
Professor of Psychiatry;
Distinguished Teaching
Professor; Clinical Director
Addiction Psychiatry Service;
Addiction Psychiatry Fellowship
Director Chair, Student Assistance Committee
Member, Medical School Admissions
Committee; UT Southwestern Medical Center;
Professor of Clinical Sciences, TCU Burnett
School of Medicine

ONLINE PROGRAM MATERIALS



Log into your Canvas Catalog account at
<https://ce.uthscsa.edu/>

Or scan this QR Code



**Load Canvas app on your phone -
Canvas Student**

Find School **UTHSCSACE.INSTRUCTURE**

KEEP LEARNING

<https://keeplearning.uthscsa.edu/>

WELCOME TO THE 10TH ANNUAL NEONATAL ABSTINENCE SYNDROME SYMPOSIUM

On behalf of the University of Texas Health Science Center at San Antonio School of Nursing, I would like to welcome you to Houston. The Neonatal Abstinence Syndrome (NAS) Symposium brings together many healthcare disciplines that are invested in caring for mothers and babies. This conference is essential to increase awareness in demystifying the stigma associated with NAS. The speakers that are from across the US will share lived experiences, research, and best practices in supporting families.

The University of Texas Health Science Center at San Antonio School of Nursing has over 800 nursing students. Courses are provided in the holistic care of women and their families during the childbearing years with an emphasis on health promotion and risk reduction, and an active program in educating and caring for moms and babies in a variety of settings.

Our School of Nursing is home to some of the most unique population health and community-based health research in the region and in the state of Texas. The nursing faculty and scientists are leading research to improve care for all members of society and bridge gaps in care.

For example, the Center for Community-Based Health Promotion with Women and Children promotes Community-Based Participatory Research (CBPR), a research method that unites communities and academic researchers in the common goal of addressing community-identified needs through a process of sharing power, establishing trust, fostering co-learning, enhancing strengths, and ultimately building community capacity has been in place for many years.

On our 10th anniversary we are in Houston Texas, the seat of Harris County. The city is named after former General Sam Houston, who was president of the Republic of Texas and won Texas's independence from Mexico at the Battle of San Jacinto. Houston is home to the Texas Medical Center, the world's largest concentration of healthcare and research institutions—and NASA's Johnson Space Center.

We are happy to partner with the Texas Health and Human Services Commission to provide the symposium titled, "Back to Basics: NAS Continuum of Care."

Thank you for attending,

Sonya R. Hardin

Sonya R. Hardin, PhD, MBA/MHA, APRN, FAAN
FAAN Dean & Professor
Dr. Patty L. Hawken Nursing Endowed
Professor School of Nursing
UT Health Science Center at San Antonio
7703 Floyd Curl Drive | Mail Code 7942
San Antonio, TX 78229-3900

Nursing.UTHSCSA.edu

10TH ANNUAL NEONATAL ABSTINENCE SYNDROME SYMPOSIUM

HOSTED IN HOUSTON, TEXAS

Theme: Back to Basics: NAS Continuum of Care

June 11-13, 2025

Houston Texas

<https://wp.uthscsa.edu/nas-symposium/>

For information about the NAS Symposium please call the toll free # 1-833-844-4735 or email Sherece McGoon at mcgoon@uthscsa.edu

DISCLAIMER: This symposium is sponsored by Texas Health and Human Services Commission in partnership with UT Health San Antonio School of Nursing. The personal views or opinions expressed in this conference do not represent the official views, policies, or positions of the Substance Intervention and Treatment Programs unit or the Texas Health and Human Services Commission or UT Health Science Center at San Antonio.

What you can expect:

1. More information about:

- The relationship between mother and child when there is a NAS diagnosis.
- Reducing stigma.
- The evolution of NAS care with the emergence of evidence-based practices.
- Strengthening relationships while in recovery.
- Support systems through families, caregivers and friends and their experiences in recovery.

2. Pre-Conferences

- Trauma Informed Care for Substance Use Disorder
- Brief Motivational Interviewing: Supporting the Behavior Change Process
- Family Care Portfolio

Since 2019, Texas has recognized **House Bill 405, 86th Legislature, Regular Session, 2019.**

Celebrate the 10th anniversary of the Neonatal Abstinence Syndrome (NAS) Symposium in 2025 by returning to the basics of NAS and the continuum of care for mothers, children and families. Join recovering families, and support agencies and health care professionals as we share ways the continuum of care for NAS has evolved over the years. Together, we can reinforce our foundational approaches, enhance current evidence-based practices for NAS, and make a lasting impact on our communities and the families we serve.

CONTINUING EDUCATION

Continuing education will be provided for nurses, physicians, psychologists, social workers, licensed chemical dependency counselors, licensed professional counselors, licensed marriage and family therapists, peer support providers and community health workers.

The University of Texas Health Science Center at San Antonio is accredited as a provider of nursing continuing professional development by the American Nurses Credentialing Center's Commission on Accreditation.

The University of Texas Health Science Center at San Antonio School of Nursing is approved by the Texas State Board of Social Worker Examiners to provide Social Worker CE.

The Centralized Training Infrastructure for Evidence Based Practices is a provider of continuing education for the following clinical licenses: Psychologists, Licensed Professional Counselors (LPC), Licensed Chemical Dependency Counselors (LCDC) and Licensed Marriage and Family Therapy (LMFT) Counselors.

This Activity has been planned and implemented in accordance with the accreditation requirement and policies of the Texas Medical Association (TMA) through the joint providership of South Coastal Area Health Education Center and The University of Texas Health Science Center at San Antonio School of Nursing. The South Coastal Area Health Education Center is accredited by the TMA to provide continuing medical education for physicians.

10th Annual Neonatal Abstinence Syndrome Symposium: Pre-Conference

South Coastal Area Health Education Center designates this activity for a maximum of 3 *AMA PRA Category 1 credit(s)*™. Physicians should only claim credit commensurate with the extent of their participation in the activity.

10th Annual Neonatal Abstinence Syndrome Symposium Conference

South Coastal Area Health Education Center designates this activity for a maximum of 11.5 *AMA PRA Category 1 credit(s)*™. Physicians should only claim credit commensurate with the extent of their participation in the activity.

South Coastal Area Health Education Center #47, is a Community Health Worker (CHW) training program that is certified by the Texas Department of State Health Services (DSHS) Promotor(a)/CHW Training and Certification Program.

10th Annual Neonatal Abstinence Syndrome Symposium Conference

South Coastal Area Health Education Center designates this activity for a maximum of 14.5 *non-DSHS Community Health Worker credits in Knowledge.*

PLANNING COMMITTEE

Kimberly Cox, RN, PhD, NE-BC, Accredited Provider Program Director, Department of Lifelong Learning, UT Health San Antonio School of Nursing

Anna Eisenberg, MPH, OSAR, Waitlist, and Capacity Coordinator, Substance Intervention and Treatment Programs, Behavioral Health Services, Texas Health and Human Services

Sonya Hardin, PhD, MBA/MHA, APRN, FAAN, Dean and Professor, Dr. Patty L. Hawken Nursing Endowed Professor, UT Health San Antonio School of Nursing

Edith King, MA, LPC, Manager of Intervention and Women's Services, Texas Health and Human Services

Justin McClenny, LCDC, Intervention Program Specialist,
Texas Health and Human Services Commission

Sherece McGoan, CE Coordinator, Department of Lifelong
Learning, UT Health San Antonio School of Nursing

SUB-COMMITTEE

Julie Ball, Certified Mental Health Peer Specialist, Mom

Elizabeth Castaneda, MHPS, LMSW, Senior Advisor, Peer
Support and Recovery, Substance use Programs, Behavioral
Health Services, Texas Health and Human Services

Briseida (Bee) Courtois, MSSW, LCDC, CME, Be Well Texas,
UT Health San Antonio

Scott Krall, MD, South Texas AHEC, UT Health San Antonio

Victoria Moreno, Prevention Behavioral Health Promotion,
Texas Health and Human Services

Laura Sisk, DNP, RN, Assistant Professor/Clinical, UT Health
San Antonio School of Nursing

Katerina Tsvetkova, MS, Prevention Program Specialist,
Texas Targeted Opioid Response (TTOR), Mental Health and
Substance Use Programs, Behavioral Health Services, Texas
Health and Human Services

THANK YOU TO OUR EXHIBITORS



EXHIBIT SPONSOR CONTACT INFORMATION

- Be Well Institute on Substance Use & Related Disorders
Bee Courtois, MSSW, LCDC, CMA, Substance Use
Treatment Director, courtois@uthscsa.edu
- Family to Family Support
Rebecca Vahle, Executive Director and Founder
rvahle@familytofamilysupport.org
- Generation O, The National Organization for Opioid-
Exposed Children
Kim Cortes, JD, MA, Director of Programs
- Grand Canyon University
Alissa Steeb, University Development Counselor
Alissa.Steeb@gcu.edu
- Happiest Baby, Inc.
Erica Ashcroft, Lead Program Specialist erica@happiestbaby.com
- JPS Health Network
Cindy Dinsmore, MA, LCDC, Program Coordinator
CDinsmor@jpshealth.org
- March of Dimes
Jennifer (Jen) Torres, Senior Executive Director,
Market Impact, JTorres@marchofdimes.org
- Medication-Assisted Recovery Anonymous (MARA)
Shelley Kamen, info@mara-international.org
- Santa Maria Hostel
Michelle Hansford, Outreach and Care Coordinator,
mhansford@santamariahostel.org
- The Council on Recovery
Keneisha Keener, MPA, CHW, Director-Community
Intervention Support Services, kkeener@councilonrecovery.org
- The Network of Behavioral Health Providers
LaToya Shields, MPA, BSW, CHW, lshields@nbhp.org
- UT Health San Antonio, School of Nursing Mommies
Toolkit
Kelly McGlothen-Bell, PhD, RN, IBCLC, FAWHONN
mcglothen@uthscsa.edu

HOTEL CONFERENCE AREA FLOOR PLAN - SECOND LEVEL

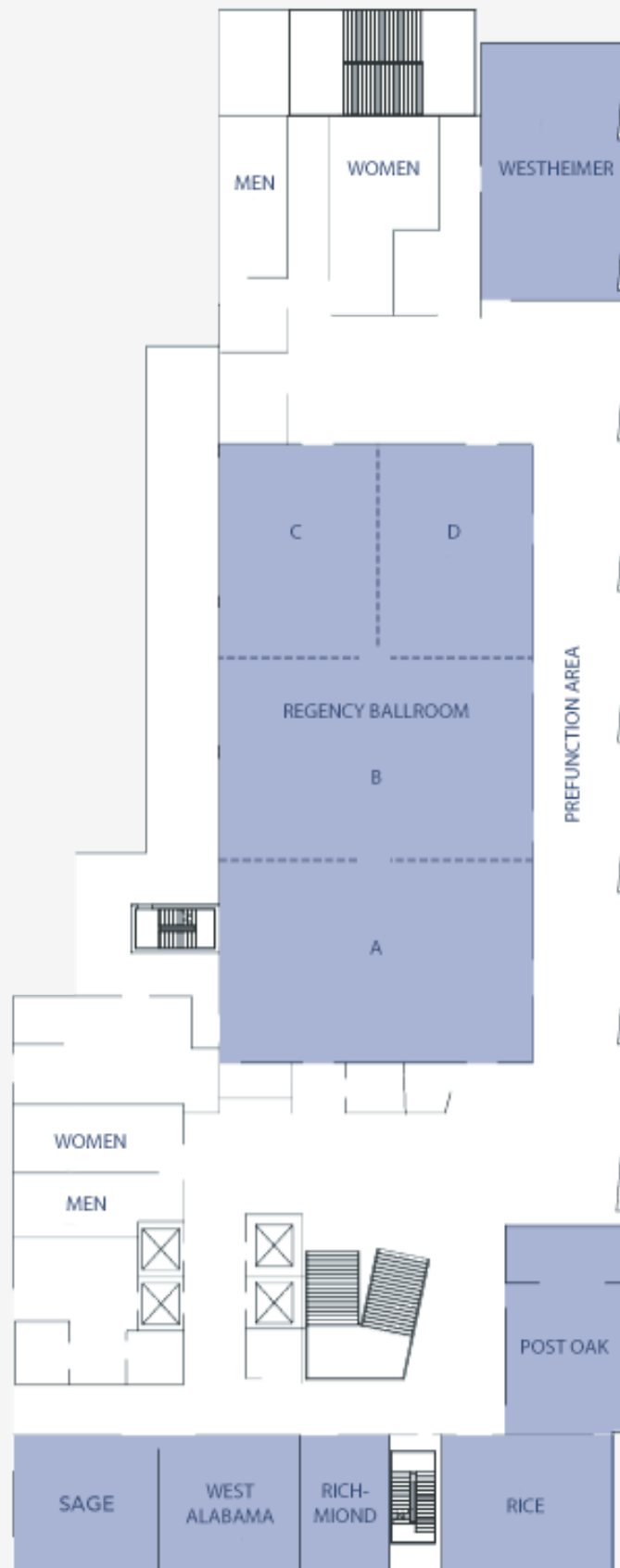
HOST HOTEL

Hyatt Regency Houston/Galleria
2626 Sage Road, Houston, TX 77056
1-832-803-1234

THINGS TO DO IN HOUSTON

Scan the QR code to visit city of Houston's visitor's page for information and maps.

Or go to www.visithoustontexas.com



CONFERENCE POLICIES

ATTENDEE CANCELLATION, SUBSTITUTION, REFUND:

The conference registration fees are not refundable.
You may send a substitute if you are unable to attend.

Please email gutierrezc8@uthscsa.edu to inform her of this change.

GUEST ATTENDANCE POLICY:

All conference activities (including educational sessions, meal functions, exhibit hall, etc.) are exclusively reserved for conference attendees. Non-registered guests (including children, family members, colleagues, etc.) are not allowed in the conference areas. Badges provided at registration are required for entrance into all functions and will be strictly enforced.

DLL Conference Modification or Cancellation: DLL reserves the right to modify the course's schedule or program as necessary. DLL also reserves the right to cancel this conference; in which case a full refund of the registration fee will be provided.

The Department of Lifelong Learning cannot be held responsible for the cost of a nonrefundable airline ticket or flight change in the event of a course cancellation or the rescheduling of the program. Upon registering in any continuing Nursing Education activity, the participant agrees that the University of Texas Health Science Center at San Antonio and their affiliates, and all personnel associated with the program are not responsible or liable for any injuries or other damages sustained by the attendee in connection with the scheduled activity, and the participant hereby releases each of them from any claims against them arising directly or indirectly from any such injury or damage. We are unable to refund any travel costs (flight, hotel, etc.) in the case of DLL cancellation.

NOTES

[illegible]

NOTES

[illegible]

NOTES

[illegible]

NOTES

[illegible]

NOTES

[illegible]

NOTES

[illegible]

NOTES

[illegible]



CASA DE ESPERANZA

TRANSITIONAL SUPPORTIVE HOUSING PROGRAM

BRINGING COMMUNITY HOME TO THOSE IN NEED

An occupancy rate of 96% highlights the success of Casa de Esperanza's permanent supportive housing program that helps with reuniting children and their mothers and placing them on the path to a bright future with proper housing, healthcare and educational opportunities.

RESOURCES FOR MENTAL AND PHYSICAL WELLNESS

Neighborhood Association Meetings, Zumba, Parenting Classes, Daycare, Resources from Multiple Agencies, and Fun Seasonal Activities are all part of the wrap-around services provided by Casa de Esperanza.

SUCCESS STORIES

In just one year, Casa de Esperanza has had a positive impact on the housing and childcare needs of its program participants with many being successfully discharged.

WestCare Texas Headquarters:

WestCare Texas San Antonio

210info@westcare.com

Ella Austin Community Center
403 S. WW White Rd., 3rd Flr.
San Antonio, Texas 78219

WestCare Texas Laredo

956info@westcare.com

2110 Lomas Del Sur, Suite 110
Laredo, Texas 78046



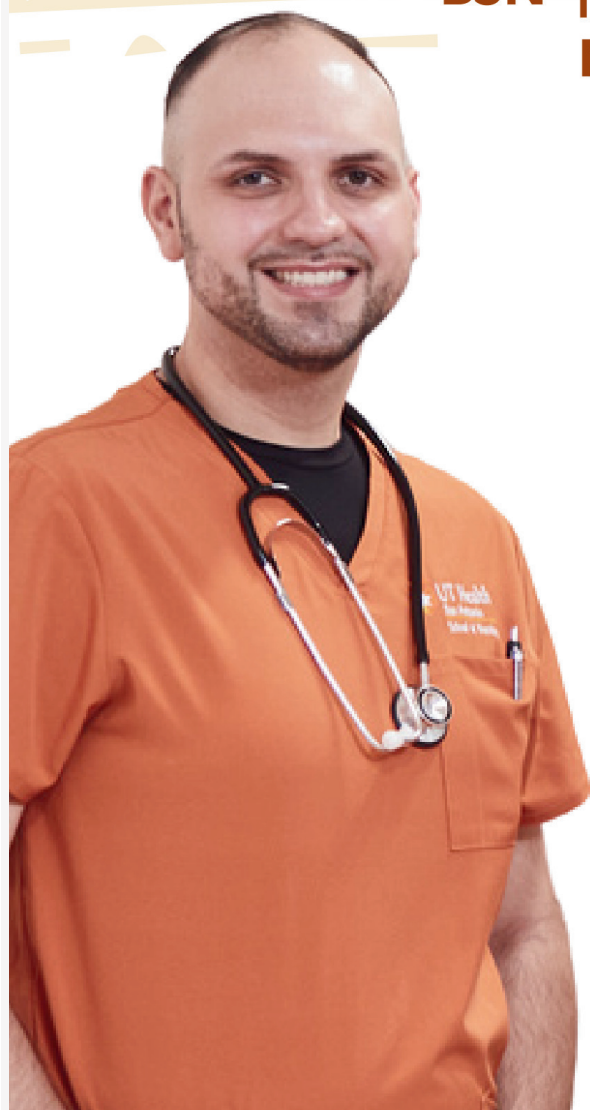
westcare.com

Uplifting the Human Spirit

Transform Lives

As a nurse, you will have the ability to help transform lives through patient care, research, and education.

**BSN | PhD in Nursing Science | DNP
Post-Graduate Certificate**



Scan to or visit
uthscsa.edu/nursing/programs
to explore programs.



UT Health
San Antonio
School of Nursing